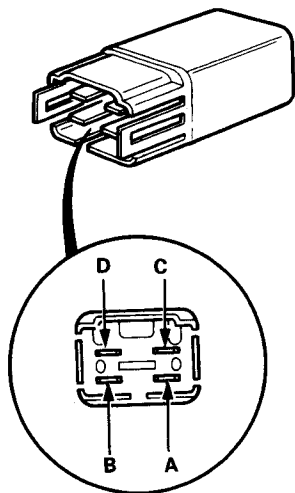
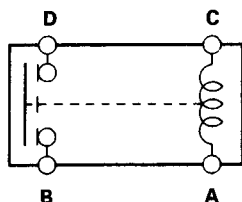


Reverse Lockout Relay (6-Speed)

Test

1. Remove the reverse lockout relay from the underhood relay box C.
2. There should be continuity between the C and A terminals.
3. There should be continuity between the D and B terminals when power and ground are connected to the C and A terminals. There should be no continuity when power is disconnected.

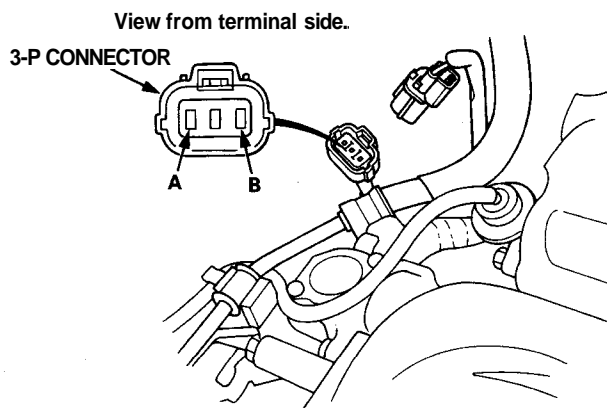


Reverse Lockout Solenoid (6-Speed)

Test

1. Disconnect the 3-P connector of the reverse lockout solenoid sub-harness.
2. Measure the resistance between terminals A and B in the reverse lockout solenoid sub-harness.

STANDARD: 9.0—13.6 Ω





3. If the resistance is not within the standard, disconnect the 3-P connector from the reverse lockout solenoid.
4. Measure the resistance between terminals A and B in the reverse lockout solenoid.

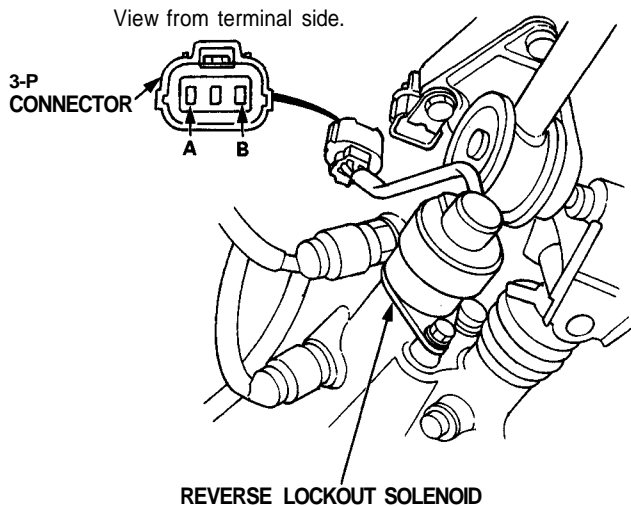
STANDARD: 9.0 — 13.6 Ω

If the resistance is within the standard, replace the reverse lockout solenoid sub-harness.

If the resistance is not within the standard, replace the reverse lockout solenoid.

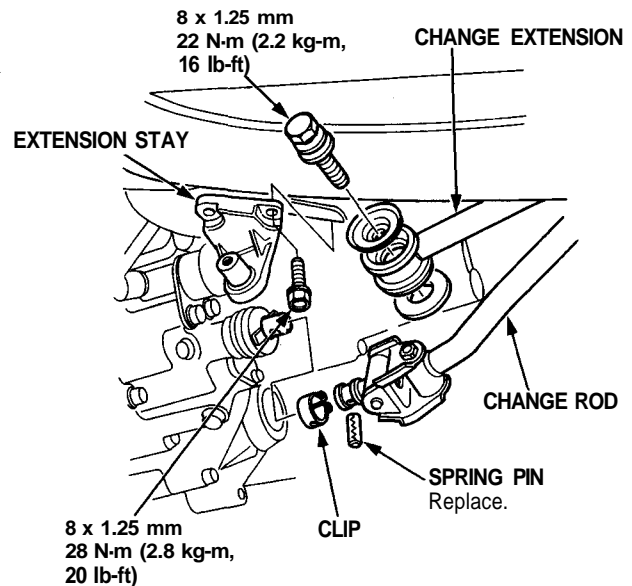
5. Test the reverse lockout solenoid operation by connecting battery power to the A terminal and ground to the B terminal. A clicking sound should be heard.

If no clicking sound is heard, replace the solenoid.

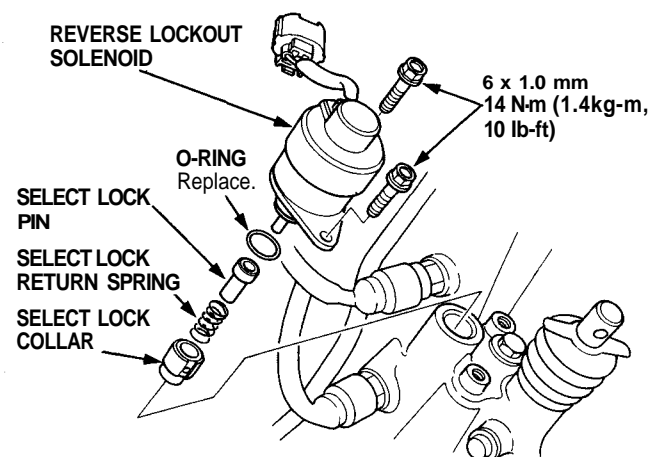


Replacement

1. Disconnect the change extension and change rod.
2. Remove the extension stay.
3. Disconnect the connector.



4. Remove the reverse lockout solenoid from the transmission.
5. Remove the select lock pin and select lock return spring.



6. Install the reverse lockout solenoid in the reverse order of removal.